



Remote Configuration for FileBrowser Suite

Remote Configuration for FileBrowser

Introduction

The ability to create and read settings files is built into all versions of FileBrowser. At its simplest, this facility allows duplication of settings from one device to another. It also allows distribution of settings to many devices using several methods.

For information specific to the **FileBrowser Professional**, **FileBrowser for Education** and **Enterprise Files** apps, please see the MDM App Configuration section.

Creating a Settings File

The easiest way to create a settings file is to do it from within the FileBrowser app on one device and then you can use the generated file on other devices to copy settings across. Find the 'Save' button in the Config tab, Admin Settings, Save All To File option. After you have created a file, which is called "Settings.FILEBROWSER" by default, you can copy it from the 'My Private Files' folder to other storage or email it from within the app so you can make it available to other devices. You can rename the file as long as the file extension is preserved as a ".FILEBROWSER" type. See the Settings Distribution section below for information on how to use the file.

Signing a Settings File

Note: Signing a settings file is not necessary when using an MDM system to distribute settings (for FileBrowser Professional, FileBrowser for Education and Enterprise Files apps).

If you create a settings file when the FileBrowser app has an Admin Password set, the settings file is digitally signed with the password. This automatically adds an extra setting called "signature" that contains the SHA-1 hash of several key pieces of information: the Admin Password, a fixed salt string and all settings data. Although a signed settings file is still readable, it cannot be modified (apart from non-material formatting) and still be usable by FileBrowser. Any attempt to change the content of a signed settings file will invalidate the file and FileBrowser will not load it.

Note the following features of signed settings files.

- FileBrowser will only create a signed file if the Admin Password is set.

- FileBrowser will reject signed settings files if the signature is incorrect for the file content.
- An unsigned settings file will be rejected if the Admin Password is set.
- When a signed settings file is read, the Admin Password in the settings file is applied to the FileBrowser installation. From this point on, the installation is protected and users may not change Admin settings unless they know the Admin Password.

The result of these features is a secure way of distributing settings that prevents user modification but allows settings to be updated at a later point.

Composing a Settings File

It's possible to edit an unsigned settings file so that you can separately distribute:

- App behaviour.
- App restrictions.
- Machine connections.
- Bookmarks.

See the “Editing a Settings File” section for more information about the format of the file.

Settings are always merged when a file is read by an installation of FileBrowser (though there are exceptions to this when using MDM App Configuration which allows greater control - see the MDM App Configuration section below for more details).

Settings File Distribution

If you are not deploying FileBrowser using an MDM system that supports App Configuration, there are several ways you can distribute settings files to users for FileBrowser setup:

- Email. If your users have an email account set up in the iOS Mail app, they can receive the settings file as an attachment and follow this workflow:
 - Tap and hold on the attachment.
 - Choose FileBrowser when prompted (this is the default).
 - When iOS switches to the FileBrowser app, tap to apply the settings.
- Safari. You can host the settings file on an intranet server and prompt users to browse to the appropriate link containing the settings file:
 - Tap and hold on the settings file link.
 - Choose FileBrowser when prompted (this is the default).
 - When iOS switches to the FileBrowser app, choose to apply the settings.
 - Note that the web server should be configured to provide the file with a mime type of “multipart/mixed”.
- Apple Configurator. If the configured devices are each assigned to individual users, the Apple Configurator app (available on the Mac App Store) allows you to install a document alongside each app. Follow these steps to use this facility for configuring FileBrowser:

- Rename the FileBrowser settings file to “Startup.FILEBROWSER”.
- Place the file in the Apple Configurator's document folder for FileBrowser. This needs to be done for each user.
- When the Configurator installs the app on a device, the settings file will be placed in FileBrowser's “On My iPad” folder location when the distribution image is deployed.
- FileBrowser will automatically import the settings file when it is launched.
- After reading the file, FileBrowser will rename it to “Settings.FILEBROWSER” which allows users to reapply the settings at a future date.

MDM App Configuration

(FileBrowser Professional, FileBrowser for Education and Enterprise Files apps only)

Some Mobile Device Management (MDM) tools allow the distribution of an iOS7 app configuration dictionary within a managed app rollout. You can therefore distribute FileBrowser and have it automatically configured from first run without any user interaction. This system offers several key advantages over manual settings file distribution:

- No user interaction is needed.
- The app is configured from startup.
- The configuration may be updated at any time.
- No signature is required in the settings file.
- Configuration may be piecemeal if desired, adding new storage locations over time.
- The MDM system allows groups of users to receive different settings.
- Feedback is supplied from each FileBrowser app to allow the MDM solution to track configuration statistics.
- Users never have access to settings files.
- Settings may be individually locked.
- Connection locations may be deleted as well as added.
- Admin Settings may be locked without requiring an Admin Password.
- All configuration and stored files/folders can be cleared using a remote-wipe operation (version 5.2 onwards).

Your MDM system's administration manual should tell you how to set each app's configuration. Usually the system presents a text box for you to copy in the XML property list (“plist”) format that is required, or provides a file Import facility. The properties will be sent to the app in the “com.apple.configuration.managed” key and FileBrowser will put these into action every time it is used. FileBrowser detects changes to the property list so that only changes are actioned.

Note for **AirWatch** users: The application deployment details on the ‘Edit Assignment’ screen includes a Send Application Configuration section. This section contains one row for each

individual setting which has a configuration key, value type and a configuration value. Click the 'Add' button at the bottom to create new rows.

Send Application Configuration

Application Configuration	Configuration Key	Value Type	Configuration Value	
	<input type="text" value="1displayname"/>	String ▾	<input type="text" value="School Network"/>	<input checked="" type="checkbox"/> + Insert Lookup Value
	<input type="text" value="1domain"/>	String ▾	<input type="text" value="school"/>	<input checked="" type="checkbox"/> + Insert Lookup Value
	<input type="text" value="1flags"/>	Integer ▾	<input type="text" value="72"/>	<input checked="" type="checkbox"/> + Insert Lookup Value
	<input type="text" value="1machinename"/>	String ▾	<input type="text" value="smb://primary/harbour"/>	<input checked="" type="checkbox"/> + Insert Lookup Value

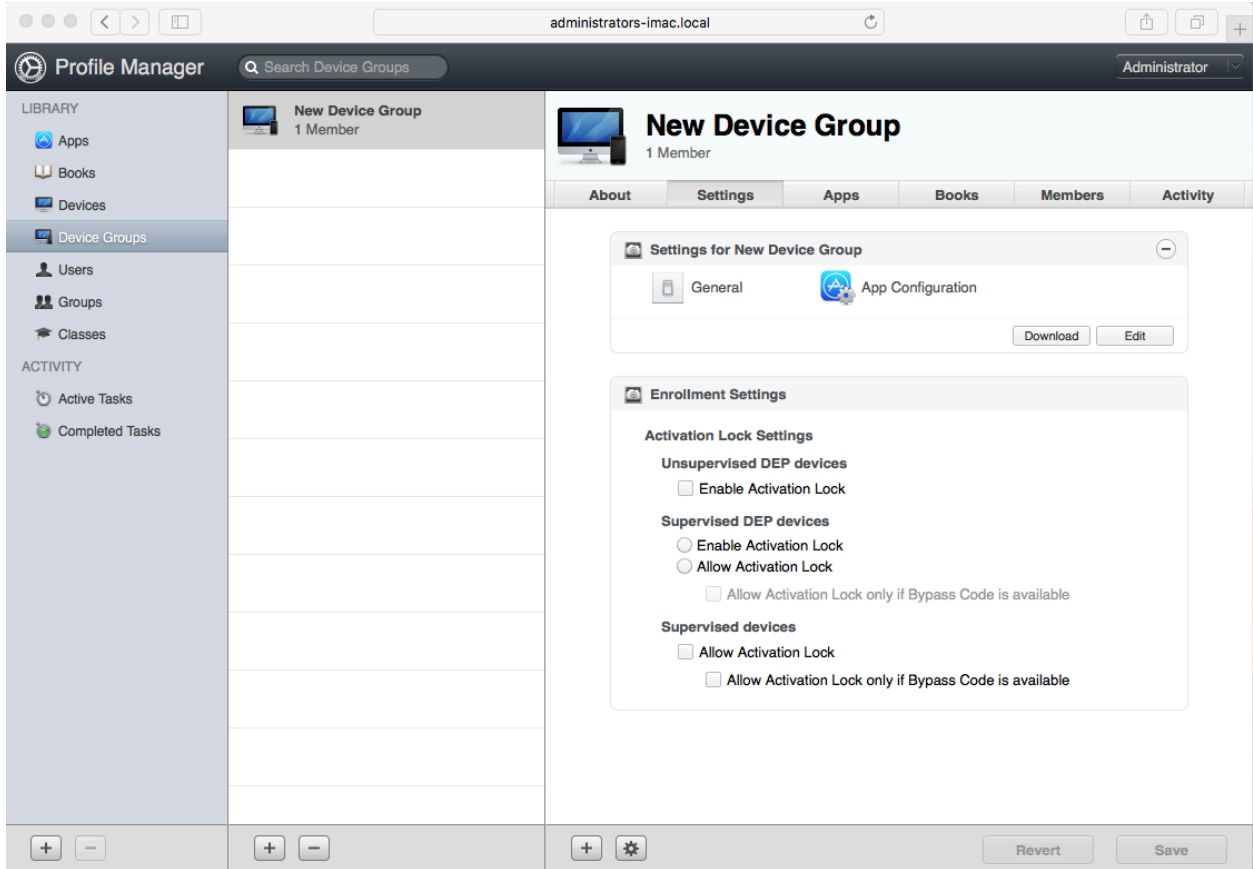
Note for **JAMF Casper Suite** users: Settings should be pasted into the App Configuration text box in JSS. XML headers and footers are not required. The format is:

```
<key>firstSettingName</key>
<string>firstSettingValue</string>
<key>secondSettingName</key>
<integer>secondSettingValue</integer>
```

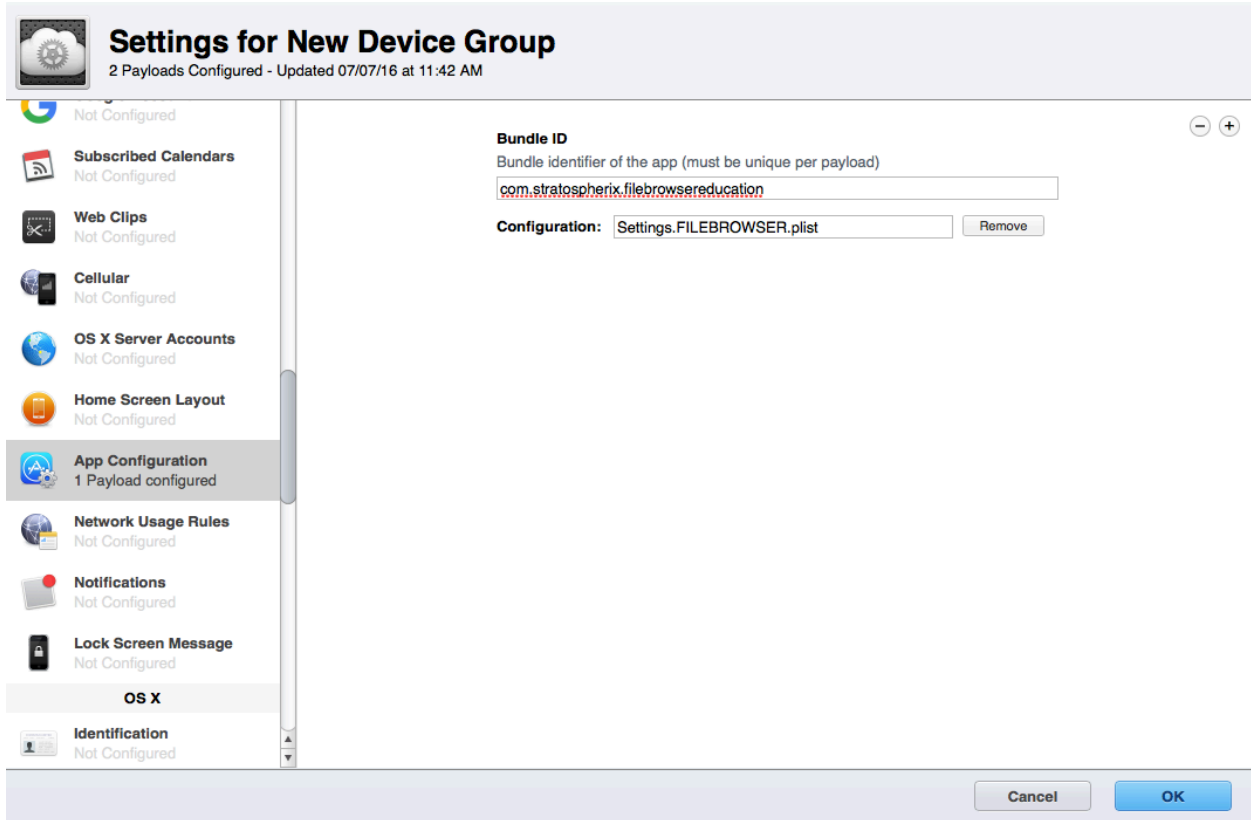
Note for **MobileIron** users: Recent versions of MobileIron make use of the AppConfig XML standard to present a user friendly categorised list of settings in the browser. This includes drop-down options, check-boxes, setting descriptions and help text. Older versions used settings files or setting/value pairs.

Note for **LightSpeed** users: You can directly use a settings file created from FileBrowser or one edited to suit your purpose. This file should include the XML header and footer.

Note for **OSX Server Profile Manager** users: A FileBrowser settings file may be assigned to an individual device or to a designated device group. The following screenshots illustrate how to deploy settings for FileBrowser for Education or FileBrowser Professional with a Settings.FILEBROWSER file.



1. From the OSX Profile Manager Web UI, select either a Device or a Device Group from the left hand side and then select the 'Settings' tab.



2. Tap the Edit button in the “Settings for New Device Group” section near the top of the screen on the right-hand side. This should bring up a new window containing the various config options. Select “App Configuration” from the left-hand list. The Profile Manager needs the Bundle ID of the app to configure. For FileBrowser for Education this is “com.stratospherix.filebrowsereducation”. For FileBrowser Professional this is “com.stratospherix.filebrowserbiz”. For Enterprise Files this is “com.stratospherix.enterprisefiles”. Profile Manager also requires the settings file to have a .plist file extension, as shown in the above screenshot, so you will need to rename it.

Once new settings are detected by an installation of FileBrowser, the app will send feedback of the following statistics via the “com.apple.feedback.managed” key. Ask your MDM system provider whether these can be accessed via your management software:

- [settingsCount](#) The number of settings that were discovered in the configuration data.
- [configCount](#) The number of times a settings file has been used.
- [remoteWipeCount](#) The number of times a remote wipe operation has been carried out (version 5.2 onwards).

To create a settings file ready for MDM App Configuration, start by generating a file from an installation of FileBrowser. Then edit the file using any text editor program. Alternatively you

can use the information in the “Edit a Settings File” section below to create your own from scratch.

The following additional settings are available when using MDM App Configuration, and may be used in combination to enforce the desired setup. These additional settings need to be manually added to the app configuration, as they won't be present in the settings file created by FileBrowser. The `remotewipe` setting may be used with either `mdm-enforce`, `lockdown` or neither of these to clear all files and configuration stored in FileBrowser. Similarly, the `resetStartupPassword` setting can be used to remove the startup password set on a device. Reset `remotewipe/resetStartupPassword` settings once they have been issued to allow new settings to be sent.

- `mdm-enforce` (numeric, non-zero indicates active)

Prevents users from changing settings but permits them to be viewed.

```
<key>mdm-enforce</key>
```

```
<integer>1</integer>
```

The existence of this setting indicates to FileBrowser that any setting you put into the MDM App Configuration should not be modifiable by a user. In version 5.2 onwards, this includes machine connection settings. In version 5.3 onwards, a user is permitted to add their own connections if the connection types are themselves permitted (see Connection Feature Switches section below).

Note: If you need some configuration settings to be available to users, make sure that these are not present in the MDM App Configuration data. Omitting a setting from the config prevents FileBrowser from enforcing it. Your MDM system may send all available settings (for example MobileIron does this when you use the web based AppConfig settings interface), so in this case all settings will be locked. If you don't want this behaviour, use the `lockdown` switch detailed below.

Note: If you generate the settings file from FileBrowser when an Admin Password is in effect and then distribute this file with `mdm-enforce` also set, on MDM managed devices the Admin Password will be activated.

- `lockdown` (numeric, non-zero indicates active)

Hides the Admin Settings section from users. In version 5.3 onwards, a user is permitted to add their own connections if the connection types are themselves permitted (see Connection Feature Switches section below).

```
<key>lockdown</key>
```

```
<integer>1</integer>
```

The existence of this setting indicates to FileBrowser that any machines you do not create in the MDM App Configuration should be deleted from the app. Thus you can replace all connections with only approved ones. In addition, all Admin Settings are blocked and users may not create their own connections (except the types permitted in

the 'disableAddMachineType' settings). In version 5.2 onwards, setting the numeric value to zero clears the lock and allows users access to settings again.

Note: If you generate the settings file from FileBrowser when an Admin Password is in effect and then distribute this file with `lockdown` also set, on MDM managed devices the Admin Password will be ignored and settings locked down with no possibility of users obtaining access.

- `remotewipe` (numeric, non-zero indicates active) (version 5.2 onwards)
Wipes all user data from My Private Files and On My iPad folders and also removes all machine settings.
`<key>remotewipe</key>`
`<integer>1</integer>`
- `deleteUnmanagedMachines` (numeric, non-zero indicates active)
The existence of this setting indicates to Enterprise Files that any machines you do not create in the MDM App Configuration should be deleted from the app. Thus you can replace all connections with only approved ones. (Available in version 14.0 of FileBrowser Professional, version 14.0 of FileBrowser for Education and 4.0 of Enterprise Files onwards. Versions of Enterprise Files prior to but not including 3.8 and versions 13.3 of FileBrowser Professional and FileBrowser for Education activated this behaviour on the `lockdown` setting instead.)
- `resetStartupPassword` (numeric, non-zero indicates active) (version 7.8 onwards)
Removes a startup password.
`<key>resetStartupPassword</key>`
`<integer>1</integer>`
Including this setting in MDM App Configuration wipes any startup password from FileBrowser. If no startup password has been set, the setting has no effect. This setting is provided as a convenience for when a user has set a startup password but has forgotten it. This is the only way to remove a startup password without knowing the password.

If your MDM system does not support App Configuration

Some MDM systems, including Cisco Meraki, do not support App Configuration settings. Using a Web Clip, which can be distributed by all MDM systems, is the recommended workaround for these cases.

Distributing settings via a Web Clip is a convenient way to either set FileBrowser Professional up or update its configuration for your users. Users need to tap on the Web Clip once to send settings to FileBrowser, so you need to educate them to do this.

Tapping on the Web Clip does two things. First, it starts FileBrowser and sends it settings. Secondly it will launch a particular connection. Both of these are set in the URL of a Web Clip. In Meraki and other MDM systems, you set up an icon, clip label and the URL. The URL contains the connection to launch and the settings to send. Here's an example:

```
filebrowserpro://myServer?1displayname=
myServer&1flags=4608&1machinename=sftp://192.168.2.4/
```

This clip creates a machine location for an SFTP server at 192.168.2.4 with display name "myServer" and then connects to it.

The format of the URL is:

```
filebrowserpro://<server display name or IP address to connect to, with optional
share/path/file names>?<settings list>
```

(Substitute 'filebrowseredu' for 'filebrowserpro' if using FileBrowser for Education app.)

Note that if any items in the URL need spaces in them, you need to replace these with the character sequence %20

The settings list consists of pairs of setting names and setting values. Names and values are separated by an equals character and each setting pair separated by an ampersand character. The names and values are identical to those found in FileBrowser settings files. Including every setting in a Web Clip is not usually practical, so only including the settings you need to change from default ones is the best approach. It's possible to create multiple server connections and bookmarks, but some MDM systems limit the length of the URL you can enter. If you find that this limits the necessary number of settings, a workaround is to create a connection to a server in the Web Clip and navigate to a folder where a full configuration file can be found and used.

Editing a Settings File

A settings file is a simple text file that uses Apple's "plist" format. This format is XML, with a basic structure of multiple setting name/setting value pairs. The character encoding of the file should be UTF-8.

The order in which settings are placed in the file is not relevant. Settings for machines and bookmarks are grouped, and this is done by prepending each setting in the group by a number.

Here is an example settings file that contains one machine entry and one setting entry:

```
<?xml version="1.0" encoding="UTF-8"?>
```

```

<!DOCTYPE plist PUBLIC "-//Apple//DTD PLIST 1.0//EN"
"http://www.apple.com/DTDs/PropertyList-1.0.dtd">
<plist version="1.0">
<dict>
  <key>1displayname</key>
  <string>my server</string>
  <key>1domain</key>
  <string></string>
  <key>1flags</key>
  <integer>0</integer>
  <key>1machinename</key>
  <string>smb://server/</string>
  <key>1username</key>
  <string>johnmclane</string>
  <key>1vpntype</key>
  <integer>0</integer>
  <key>waitForSearchButton</key>
  <integer>0</integer>
</dict>
</plist>

```

The machine, indexed '1' in the file, is a PC. The icon used to show the machine type and all the switch settings are encoded in the flags value, details of which are given below in the "Adding a Machine" section. The single setting, 'waitForSearchButton', is set to zero (off) which means that folders are filtered by the search text as it is typed. Nearly all of FileBrowser's configuration settings can be set in a file.

The basic format of the settings file is as follows:

```

<?xml version="1.0" encoding="UTF-8"?>
<!DOCTYPE plist PUBLIC "-//Apple//DTD PLIST 1.0//EN"
"http://www.apple.com/DTDs/PropertyList-1.0.dtd">
<plist version="1.0">
<dict>
  <key>firstSettingName</key>
  <string>firstSettingValue</string>
  <key>secondSettingName</key>
  <integer>secondSettingValue</integer>
  ...
</dict>
</plist>

```

You may control as many settings as are necessary for your users.

All settings are either text values or numeric values. A numeric value of "0" also indicates that a switch setting is OFF and a value of "1" indicates the switch is ON.

In the specification below, *italic* text denotes a setting's key name.

Adding a Machine

Each setting belonging to a machine is indexed with the same number. Machines in the file must be numbered from 1 consecutively, and there is no limit to the number of machines that can be added.

Settings for a machine are: *displayname*, *machinename*, *username*, *password*, *flags* and *vpntype*. Note that the *password* setting will not be added to a settings file by Filebrowser (the settings file is not encrypted so adding passwords is not recommended), but you may add this setting if you wish.

Machine setting details:

<i>displayname</i>	A text string containing the description of the remote connection, used in the Locations tab of FileBrowser.
<i>machinename</i>	The URL of the remote connection. This takes one of these formats: <code>smb://<machineName>/<optionalShareAndPathName></code> <code>http://<WebDAVMachineName>/<WebDAVRootPath></code> <code>https://<WebDAVMachineName>:<WebDAVPortNumber>/<WebDAVRootPath></code> <code>></code> <code>ftp://<FTPMachineName>:<FTPPortNumber>/<FTPRootPath></code> <code>ftps://<FTPMachineName>:<FTPPortNumber>/<FTPRootPath></code> <code>sftp://<FTPMachineName>:<FTPPortNumber>/<FTPRootPath></code> <code>skydrive:// (MS OneDrive)</code> <code>gdrive://</code> <code>dropbox://</code> <code>box://</code> <code>onepro:// (MS OneDrive for Business)</code> <code>b2://</code> <code>s3://</code> <code>pcloud://</code>
<i>domain</i>	Leave as a blank string for cloud connections. For SMB connections, set this to the domain part of a UNC path, for example "local" or "company.com".

<i>username</i>	The account name for the connection. If there is no account name, this may be set to “<!-BLANK-->” which will prevent FileBrowser prompting the user for the name.
<i>password</i>	Optional The account password for the connection. If there is no account password, this may be set to “<!-BLANK-->” which will prevent FileBrowser prompting the user for the password.
<i>flags</i>	A numeric value built from binary flags. Use the following table, adding the desired values to build up the flags value.
<i>vpntype</i>	A numeric value indicating the VPN type. 0 = NONE 1 = L2TP 2 = PPTP 3 = IPSEC 4 = SONICWALL
<i>connectionurl</i>	Optional http/https url used to trigger a third party VPN to connect before attempting a SMB connection.

Machine flags details:

Add the values together to form the complete flags number.

Enable NetBIOS	2
Enable Compatibility Mode	4
Do not enumerate shares automatically	8
Disable SMB pipelining	16
Prompt for credentials on first connection	128
Start VPN before connecting	256
FTP Passive Mode	262144
Require Touch ID for login	524288
Verify Certificate	8388608

FTP Ignore PASV Address	16777216
Auto Disconnect on App Closed	33554432
SFTP Open User's Home Folder	67108864
Location is Read Only	134217728
OpenText Auth using Credentials	268435456
FTP Force Showing Hidden Files	536870912
(Only one of the following values should be added)	
PC	0
Mac	512
TimeCapsule	1024
NAS	1536
Dropbox	2048
OneDrive	2560
Box	3072
WebDAV	3584
FTP	4608
Google Drive	5632
OneDrive for Business	6144
SharePoint	6656
Amazon S3	8704
Backblaze B2	9216
pCloud	9728
OpenText	10752

For Amazon S3 (and compatible services) the region code can be set into the [Nconnectionurl](#), for example [eu-west-2](#). (using the drop-down setting in the GUI for the region will instead encode the value into the flags). If the storage system is a third party one and not Amazon, the

endpoint URL can be entered into the `Nmachinename` setting, replacing `s3://` with `https://server.com`

Machine entries may also have pre-configured shares and folder paths, often used when FileBrowser is configured to not request the list of shares from the SMB server. These take the following form:

```
<key>3machine1sharename</key>
<string>myshare</string>
```

In this example, 3 is the index of this set of machine settings and 1 is the index of the share name. The indexes of share names follow the same rules as do machine indexes in the file.

Adding a Bookmark

Bookmarks to local or remote locations also use the consecutive numbering scheme. Here is an example of a bookmark to the default Photo Stream in the iOS Photo Library:

```
<key>1bookmarkdate</key>
<integer>1396724980</integer>
<key>1bookmarkfilename</key>
<string></string>
<key>1bookmarkname</key>
<string>My Photo Stream</string>
<key>1bookmarkpath</key>
<string>Photo Stream/My Photo Stream</string>
<key>1bookmarkserver</key>
<string>localhost</string>
<key>1bookmarkshare</key>
<string>Photo Library</string>
<key>1bookmarktype</key>
<integer>2</integer>
<key>1bookmarkxpos</key>
<integer>0</integer>
<key>1bookmarkypos</key>
<integer>0</integer>
```

Bookmark details:

<i>bookmarkdate</i>	Date bookmark was created (optional). Seconds since Jan 1 1970.
<i>bookmarkfilename</i>	If the bookmark is for a file rather than a folder, this setting is the file's name.

<i>bookmarkname</i>	The name shown in FileBrowser's menu for this bookmark.
<i>bookmarkpath</i>	The file system path.
<i>bookmarkserver</i>	The server name. For cloud connections this is the display name of the connection so that it can be uniquely identified. For local connections this is "localhost".
<i>bookmarkshare</i>	The share name.
<i>bookmarktype</i>	Number representing type of location: 2 = local folder 3 = local file 6 = remote folder 7 = remote file
<i>bookmarkxpos</i>	If the bookmark is a place in a document, this is the horizontal position (optional).
<i>bookmarkypos</i>	If the bookmark is a place in a document, this is the vertical position (optional).

Adding a Synchronized File or Folder

(Enterprise Files app from version 1.1 and FileBrowser Professional app from version 8.9.)
To place a file or folder in the Sync Files location, the path to the file or folder and a flag specifying whether the item is a file or folder is needed. Here is an example of a synchronised file entry and a folder entry. Note that the server name should match the display name of the connection location and may include cloud locations. Synchronised locations also use the consecutive numbering scheme.

```
<key>1offlineRemotePath</key>
<string>MyServerName/SharedFolder/SubFolder/DocumentName.doc</string>
<key>1offlineRemoteIsFolder</key>
<integer>0</integer>
<key>2offlineRemotePath</key>
<string>MyDropbox/Folder/SubFolder</string>
<key>2offlineRemoteIsFolder</key>
<integer>1</integer>
```

Sync and Backup Task Settings

Additional Sync Files settings available in FileBrowser Professional 9.2 and Enterprise Files 1.4:

```
<key>1offlineRemoteIsReadOnly</key>
```


`<integer>1</integer>`

0 = New files can be created in this sync folder and they will be uploaded to the source server.

1 = Folder is read only - sync direction is from server to iPad only.

`<key>1offlineSyncFileExtensions</key>`

`<string>docx,xlsx,pdf</string>`

Files with the listed file extensions (separated by commas) will be synchronised. Other files will be ignored. An empty list implies all files will be synchronised.

Additional Sync Files settings available in FileBrowser Professional 20.21 and Enterprise Files 6.5:

`<key>1offlineSyncFileExclusions</key>`

`<string></string>`

Files/Folders with matching names (separated by commas) will be excluded from sync/backup. A single '*' character in a name allows portions of a name to be wildcarded.

Additional Sync Files settings available in FileBrowser Professional 20.14 and Enterprise Files 6.2:

`<key>1offlineRemoteSyncFrequencyMins</key>`

`<integer>1440</integer>`

Minimum time interval between sync/backup task runs (provided background update feature is enabled in iOS settings).

Additional Sync Files settings available in FileBrowser Professional 13.0 and Enterprise Files 4.0:

`<key>1offlineSyncSourcePath</key>`

`<string>On My iPhone/sync-folder</string>`

This parameter, if not left blank or unset, contains the path to a local folder that will be uploaded to the path in the `offlineRemotePath` setting.

`<key>1offlineDisplayName</key>`

`<string>Sync One</string>`

This parameter, if not left blank or unset, sets the display name of the sync location. The name should be unique amongst the sync locations.

Additional Sync Files settings available in FileBrowser Professional 23.2 and Enterprise Files 7.1:

`<key>1offlineRemoteBackupMode</key>`

`<integer>0</integer>`

This parameter controls deletion of files in backup destination folders.

0 = Files that are removed from the source are not deleted from the destination.

1 = Can delete files that have been previously backed up.

2 = Can delete any files that are not in the source.

3 = Can delete files and folders that are not in the source.

It's also possible to control whether background synchronisation occurs when the device is using a mobile data connection:

```
<key>disableOfflineMobileData</key>
```

```
<integer>0</integer>
```

0 = Background sync may use mobile data.

1 = Do not use mobile data during background sync.

Controlling whether sync locations are shown and can be created:

```
<key>disableOfflineContent</key>
```

```
<integer>0</integer>
```

0 = Sync locations are shown.

1 = Sync locations will not be shown.

```
<key>disableSyncToRemote</key>
```

```
<integer>0</integer>
```

0 = Users can create their own backup locations to copy local files and folders to remote locations. (The `disableOfflineContent` setting should be off to allow this.)

1 = Prevent creation of backup tasks of local content to remote folders.

(Setting available in Enterprise Files V4.0 and onwards, FileBrowser Professional 14.0 and onwards.)

```
<key>disableSyncToLocal</key>
```

```
<integer>0</integer>
```

0 = Users can create their own sync locations for remote locations. (The `disableOfflineContent` setting should be off to allow this.)

1 = Prevent creation of sync tasks of remote content to local sync folders.

(Setting available in Enterprise Files V6.0 and onwards, FileBrowser Professional 20.0 and onwards.)

```
<key>disableCustomTasks</key>
```

```
<integer>0</integer>
```

0 = Users can create their own custom tasks. (The `disableOfflineContent` setting should be off to allow this.)

1 = Prevent creation of custom tasks.

(Setting available in FileBrowser Professional 20.38 and onwards.)

Updating and Removing Machines, Bookmarks and Sync Tasks added 6 Jan 2022

When sending machines, bookmarks and sync tasks to deployed apps, new items are automatically added to the configuration if the display name setting doesn't match an existing item. This allows you to add new items without re-sending all previous items. You can also send an item that will search for an existing one and delete it if desired. Here are the options:

Add an item: Send a settings group that contains a new unique display name.

Example for a machine entry:

```
<key>1displayname</key>
<string>my server</string>
<key>1machinename</key>
<string>smb://server/</string>
```

Modify an item: Send a settings group that contains the display name for an existing item.

Example for a machine entry:

```
<key>1displayname</key>
<string>my server</string>
<key>1machinename</key>
<string>smb://server2/</string>
```

Delete an item: Send a settings group that contains the display name for an existing item and the word 'delete' in the server name.

Example for a machine entry:

```
<key>1displayname</key>
<string>my server</string>
<key>1machinename</key>
<string>delete</string>
```

Example for a bookmark entry:

```
<key>1bookmarkname</key>
<string>My Bookmark</string>
<key>1bookmarkserver</key>
<string>delete</string>
```

Example for a sync task:

```
<key>1offlineDisplayName</key>
<string>Sync One</string>
<key>1offlineRemotePath</key>
<string>delete</string>
```

Favourites

Add favourite locations using these settings:

```
<key>favourite1machine</key>  
<string>My NAS</string>  
<key>favourite1path</key>  
<string>Shared Files/Project1</string>  
<key>favourite1display</key>  
<string>Project One</string>
```

The numbering is similar to the way adding server locations and bookmarks works, with items in the file starting at 1 and incrementing. The favourite machine name setting is required, whereas the path and display settings are optional. The favourite machine name setting should match the display name of an existing location. Note that a favourite location display name will be ignored if the path is empty or not supplied.

(Version 7.5 of Enterprise Files onwards, version 24.0 of FileBrowser onwards.)

Other Configuration Settings

Configuration settings are grouped into the same sections that they are arranged in the FileBrowser app.

Preferences

```
<key>skipCopyMoveHints</key>  
<integer>0</integer>  
0 = Show a hint popup after selecting files to copy or move.  
1 = Do not show hint popups.
```

```
<key>filenameScroll</key>  
<integer>1</integer>  
0 = Show long filenames with ellipsis.  
1 = Long file names are scrolled from left to right.
```

```
<key>enableFullScreenViewer</key>  
<integer>0</integer>  
0 = Tapping a document uses standard document viewer with page and  
bookmark controls.  
1 = Tapping a document uses alternate document viewer with print and export  
controls.
```

`<key>openDocumentsMaximised</key>`

`<integer>0</integer>`

- 0 = Opening a document in the standard document viewer will show the menus.
- 1 = Opening a document will hide the menus and show the document maximised. (iOS app versions only. Enterprise Files app from version 7.5, FileBrowser from version 23.16.)

`<key>gridModeMenuButtons</key>`

`<integer>0</integer>`

- 0 = In grid view mode, menu buttons are not shown. To bring up a file menu, tap and hold the file name. Note that this replaces tap and hold to go to select mode, so for select mode tap the top-right Select button.
- 1 = Show menu buttons on each file in grid view mode.

`<key>announceObjectAfter</key>`

`<integer>0</integer>`

- 0 = Accessibility - VoiceOver will say 'File' or 'Folder' before saying the name of each listed item.
- 1 = VoiceOver will say 'File' or 'Folder' after saying the name of each listed item.

`<key>announceTrackPos</key>`

`<integer>0</integer>`

- 0 = In the Audio tab, use a track position slider that supports coarse and fine adjustments by sliding downwards as well as left to right.
- 1 = In the Audio tab, use a standard slider control that supports VoiceOver.

`<key>largeTextFileNames</key>`

`<integer>0</integer>`

- 0 = Standard size labels for file names in grid, list and columns modes.
- 1 = Larger size labels for file names in grid, list and columns modes.

`<key>photoLibraryRaw</key>`

`<integer>0</integer>`

(Enterprise Files app from version 1.1 and FileBrowser series from version 8.9.)

- 0 = For speed, create unique names for photos in the Photo Library.
- 1 = Use original photo file names and allow photos with multiple resources (for example both jpg and raw formats) to be listed and copied. This option also uses additional Photo Library queries and is therefore slower.

`<key>disableCasting</key>`

`<integer>0</integer>`

(Enterprise Files app from version 1.1, FileBrowser Professional from version 9.3 and FileBrowser for Education from version 9.3.)

- 0 = Chromecast and AirPlay are available for images, videos and audio.

1 = Chromecast and AirPlay are not available for images, videos and audio. This also means that streaming video and audio will work when the app is isolated in a per-app VPN.

`<key>disableMP3Tags</key>`

`<integer>0</integer>`

0 = Show album art and embedded track, album and artist name in the Audio tab view.

1 = Only show the audio file name in the Audio tab view.

`<key>disableVideoAutoResume</key>`

`<integer>0</integer>`

0 = Automatically resume playing videos from the last known position (for the last 100 videos).

1 = Always play videos from the start.

`<key>disableAudioAutoResume</key>`

`<integer>0</integer>`

0 = Automatically resume playing audio files from the last known position (for the last 100 videos).

1 = Always play audio files from the start.

`<key>switchToAudioView</key>`

`<integer>1</integer>`

0 = On iPhone, selecting an audio file to play will enable the audio tab but not switch to it.

1 = On iPhone, switch the view to the audio tab after selecting an audio file to play.

`<key>autoStartVideo</key>`

`<integer>1</integer>`

0 = After completing video playback, reset the playback position to the start of the file.

1 = After completing video playback, play the next video in the folder, respecting the current slideshow mode. This allows repeated and random video playback from the current folder.

`<key>replayAudioVideo</key>`

`<integer>0</integer>`

0 = Play selected audio and queue remaining ones in folder.

1 = Play all folder's audio files on repeat starting from selected one.

2 = Shuffle play a folder's audio files on repeat starting from selected one.

3 = Play selected audio once and then stop.

Note that this setting only affects audio playback. For video playback modes please refer to the slideshow section.

`<key>showVideoLabel</key>`

`<integer>1</integer>`

- 0 = Display the current playing video file name at the start and when paused.
- 1 = Do not display the current playing video file name.

`<key>slideshowDelay</key>`

`<integer>0</integer>`

Number of seconds interval between loading and showing each picture in a slideshow. The number should be in the range zero to sixty.

`<key>slideshowMode</key>`

`<integer>1</integer>`

- 0 = Show all pictures in a folder repeatedly.
- 1 = Show randomly selected pictures continuously.
- 2 = Show all pictures in a folder and then stop.

`<key>transitionMode</key>`

`<integer>0</integer>`

- 0 = Fade.
- 1 = Slide.
- 2 = Slide left.
- 3 = Swap.
- 4 = None.

Note that when transitioning from a video, a fade will always be performed.

`<key>adminPassEndsViewer</key>`

`<integer>0</integer>`

Available in FileBrowser 9.0, FileBrowser Professional 9.0, FileBrowser for Education 9.0 and Enterprise Files 1.3. If iPads are being managed from MDM, the 'lockdown' setting cannot be used in combination with this feature. Instead, use the 'configPassword' setting to directly set the Admin Password.

- 0 = Admin password not required to exit image/video viewer.
- 1 = Users need to enter the Admin Password in order to exit the image/video viewer.

`<key>folderSearchMode</key>`

`<integer>0</integer>`

- 0 = Ask the user whether to include sub-folders when searching.
- 1 = Never search sub-folders when searching for files.
- 2 = Always search sub-folders when searching for files.

<key>waitForSearchButton</key>

<integer>0</integer>

0 = Filter the folder content based on each search text keypress.

1 = Wait until the Search button is tapped before filtering (speeds up search for when there are large numbers of files in the folder).

<key>barCodeToolBarButton</key>

<integer>0</integer>

0 = Show search icon on folder bottom tool bar.

1 = Show barcode scan icon on folder bottom tool bar.

(Version 8.2 of FileBrowser Professional onwards)

<key>fileViewMode</key>

<integer>4</integer>

1 = Sort files/folders by name.

2 = Sort files/folders by date.

3 = Sort files/folders by size.

4 = Sort folders by name first and then list files by name.

5 = Sort files/folders by file extension (type).

<key>saveSelection</key>

<integer>0</integer>

0 = Once a file copy is complete, the current selection of files is forgotten.

1 = Once a file copy is complete, the current selection of files is retained so that the same files can be pasted to another folder.

(Version 9.2 of FileBrowser, FileBrowser Professional and FileBrowser for Education, version 1.4 of Enterprise Files.)

<key>capHiResAudio</key>

<integer>0</integer>

0 = Record AAC 22.05kHz compressed audio.

1 = Record uncompressed WAV 44.1kHz audio.

(Version 11.0 of FileBrowser, version 11.0 of FileBrowser Professional, version 11.0 of FileBrowser for Education onwards/Version 2.5 of Enterprise Files onwards).

<key>capHiResPhoto</key>

<integer>0</integer>

0 = Reduce captured photo resolution to 1250 pixels along long edge.

1 = Use full resolution of camera.

(Version 11.0 of FileBrowser, version 11.0 of FileBrowser Professional, version 11.0 of FileBrowser for Education onwards/Version 2.5 of Enterprise Files onwards).

<key>capHiResVideo</key>

<integer>0</integer>

0 = Use iOS Medium resolution video setting.

1 = Use iOS High resolution video setting.

(Version 11.0 of FileBrowser, version 11.0 of FileBrowser Professional, version 11.0 of FileBrowser for Education onwards/Version 2.5 of Enterprise Files onwards).

<key>uiThemeCode</key>

<integer>7</integer>

7 = Light theme.

6 = Dark theme.

5 = Teal theme (FileBrowser Professional only).

0 = Pinstripe theme (FileBrowser Professional only).

(Version 9.6 of FileBrowser Professional and FileBrowser for Education, version 1.8 of Enterprise Files.)

<key>squareThumbnails</key>

<integer>0</integer>

0 = Image and video thumbnails will be shown using their original aspect ratio.

1 = Image and video thumbnails are cropped square.

(Version 11.0 of FileBrowser, version 11.0 of FileBrowser Professional, version 11.0 of FileBrowser for Education onwards/Version 2.5 of Enterprise Files onwards).

<key>hideQuickAccessBar</key>

<integer>0</integer>

0 = The Quick Access Bar containing recent visited folders and favourite locations is shown on screen.

1 = The Quick Access Bar is hidden.

(Version 11.0 of FileBrowser, version 11.0 of FileBrowser Professional, version 11.0 of FileBrowser for Education onwards/Version 2.5 of Enterprise Files onwards).

<key>listModeOpenInButtons</key>

<integer>0</integer>

0 = Do not show Edit In Place app icon buttons in list view mode.

1 = Show Edit In Place app icon buttons in list view mode (disabled on iPhone portrait view).

(Version 15.5 of FileBrowser, FileBrowser Professional and FileBrowser for Education, Version 5.3 of Enterprise Files onwards.)

<key>openInFileTypes</key>

<string>docx,xlsx,pptx,pdf</string>

Files with the listed file extensions (separated by commas) will be available for the 'Edit In Place' option (available either from the file context menu or the list mode app icons). Note that for files not matching a listed extension, using the 'Share File...' option may still result in an in-place edit if the file is located in the On My iPad or My Private Files locations.

(Version 15.4 of FileBrowser, FileBrowser Professional and FileBrowser for Education, Version 5.3 of Enterprise Files onwards.)

Hints and Tips

`<key>tipsDisabled</key>`

`<integer>0</integer>`

0 = Show the hints button for previously unviewed hints.

1 = Do not show the hints button.

Bookmarks

`<key>bookmarkViewMode</key>`

`<integer>1</integer>`

1 = User arranged.

2 = Sorted by name.

3 = Sorted by server name.

4 = Sorted by date.

`<key>freezeBookmarks</key>`

`<integer>0</integer>`

0 = Users can create and delete bookmarks.

1 = Bookmarks are read-only.

(Version 5.3 of FileBrowser Professional onwards/All versions of FileBrowser for Education)

`<key>bookmarksToApps</key>`

`<integer>1</integer>`

0 = Links to other apps/Safari are disabled.

1 = Links to other apps/Safari are enabled. These links can be in documents or in QR codes or Bookmark links.

(Version 9.3 of FileBrowser Professional and FileBrowser for Education, version 1.5 of Enterprise Files.)

`<key>hideBookmarkHistory</key>`

`<integer>1</integer>`

0 = The file and folder history list is shown on the bookmarks tab.

1 = The file and folder history list is not shown.

(Version 9.5 of FileBrowser Professional and FileBrowser for Education, version 1.7 of Enterprise Files.)

`<key>hideBookmarkLinkEntry</key>`

`<integer>1</integer>`

0 = The bookmark link text box is shown on the bookmarks tab.

1 = The bookmark link text box is not shown.

(Version 23.2 of FileBrowser Professional and FileBrowser for Education, version 7.0 of Enterprise Files.)

Storage/Thumbnails

`<key>disableDocCache</key>`

`<integer>1</integer>`

0 = Store local copies of accessed documents for faster subsequent access. If the file on the server changes, the user will need to tap the Refresh icon in order to download the updated document.

1 = Disable the document cache and download a document every time the user taps on it.

`<key>autoThumbnailMode</key>`

`<integer>1</integer>`

0 = Do not load thumbnails for files unless the image is fully loaded.

1 = Load thumbnails for files that are listed on screen.

2 = Load all thumbnails for current folder.

`<key>extractVideoThumbnailsSMB</key>`

`<integer>0</integer>`

Available in FileBrowser 9.0, FileBrowser Professional 9.0, FileBrowser for Education 9.0 and Enterprise Files 1.3.

0 = Do not load thumbnails for video files on SMB connections.

1 = Load video thumbnails.

`<key>maxThumbnails</key>`

`<integer>2400</integer>`

The maximum number of thumbnails preserved in FileBrowser's cache. Maximum value is 5000.

Show Files

`<key>showAdminShares</key>`

`<integer>1</integer>`

0 = Administration shares are hidden.

1 = Administration shares are shown.

<key>showHiddenFiles</key>

<integer>1</integer>

0 = Files with the Hidden attribute are hidden.

1 = Hidden files are shown.

<key>showSystemFiles</key>

<integer>1</integer>

0 = Files with the System attribute are hidden.

1 = System files are shown.

<key>hideXMPFiles</key>

<integer>0</integer>

0 = Show .XMP files containing image metadata in folder listings.

1 = Hide .XMP files in folder listings. Image metadata can still be seen by tapping the info button in the image viewer.

Startup Preferences

<key>askPasswdSecs</key>

<integer>0</integer>

Only applies when a startup password is active. When set to zero, FileBrowser will prompt for the startup password at every app start or resume. If set to a number of seconds and FileBrowser was last used within that time, the prompt for the password is skipped at app start or resume. Permitted values are 0, 60, 600, 1800.

<key>autoBookmarkEnabled</key>

<integer>0</integer>

0 = At startup, show locations list.

1 = At startup, show the last folder opened. (Feature disabled in 5.1, re-enabled in 5.5.)

<key>hideMenusOnLaunch</key>

<integer>0</integer>

0 = At startup, show favourites, local and remote locations.

1 = At startup, show only predefined bookmarks in the locations list.

(Version 5.3 of FileBrowser Professional onwards/All versions of FileBrowser for Education)

<key>autoMyFilesLogin</key>

<integer>0</integer>

0 = When switching to the app and the startup password is required, My Private Files will not be locked.

1 = When switching to the app and the startup password is required, My Private Files will be locked.

(FileBrowser, FileBrowser Professional, FileBrowser for Education from 11.0, Enterprise Files from 2.5.)

<key>disableStartupPopup</key>

<integer>0</integer>

0 = On first install or app upgrade, show a welcome popup.

1 = Suppress the welcome popup on first install or app upgrade.

(Version 9.6 of FileBrowser Professional onwards. The welcome popup is never shown for FileBrowser for Education or Enterprise Files.)

Remote Permissions

<key>canDeleteRemoteFiles</key>

<integer>1</integer>

0 = Files and folders on SMB servers cannot be deleted. Similarly, files may not be moved from SMB storage to other storage.

1 = Files and folders on SMB servers may be deleted or moved to other storage.

<key>canPasteRemoteFiles</key>

<integer>1</integer>

0 = Files and folders cannot be created on SMB servers.

1 = Files and folders can be created on SMB servers.

<key>writeXMPFiles</key>

<integer>0</integer>

0 = creation and modification of XMP files is governed by the 'canPasteRemoteFiles' setting.

1 = Permit XMP file creation and modification even if 'canPasteRemoteFiles' is not set.

(Version 11.0 of FileBrowser Professional onwards/Version 2.5 of Enterprise Files onwards)

Data Security

<key>clearCacheOnExit</key>

<integer>0</integer>

0 = When the app is switched to background, FileBrowser's cache of files read from remote storage is trimmed to less than 100 files that are smaller than 100KB and less than 10 files that are larger than 100KB.

1 = When the app is switched to background, FileBrowser's cache is completely cleared. This does not affect thumbnails which are controlled separately with the `maxThumbnails` setting.

`<key>encryptionMode</key>`

`<integer>0</integer>`

0 = iOS data protection class is 'No Protection'.

1 = iOS data protection class is 'Until First Unlock'.

2 = iOS data protection class is 'Complete Protection'.

`<key>neverDisableAutoLock</key>`

`<integer>0</integer>`

0 = iOS screen will not auto-lock if viewing images/video or transferring files.

1 = iOS screen will auto-lock even if viewing images/video or transferring files.

(Version 11.0 of FileBrowser Professional onwards/Version 2.5 of Enterprise Files onwards)

User Credentials

`<key>disableSaveCreds</key>`

`<integer>0</integer>`

0 = FileBrowser will remember user names and passwords.

1 = FileBrowser will clear all stored user names and passwords and always prompt for them when connections are made.

`<key>defaultUserName</key>`

`<string>myAccountName</string>`

When creating a new machine connection, FileBrowser will use this user name as the default account name.

`<key>cacheCredentials</key>`

`<integer>0</integer>`

0 = The prompt for user name and password is always cleared.

1 = Show the last-entered user name and password so that users don't have to re-enter them for different connections with identical logins. These are automatically cleared if the app exits or the device is locked.

(Version 5.3 of FileBrowser Professional onwards/All versions of FileBrowser for Education)

iCloud Features

`<key>disableBackup</key>`

`<integer>0</integer>`

0 = When the iPad/iPhone is backed up to either iTunes (using the USB cable) or iCloud Backup (if that has been enabled), the contents of the My Private Files and On My iPad folders will be included in the backup.

1 = FileBrowser exclude the local folders from the backup.

`<key>disableiCloudImportExport</key>`

`<integer>0</integer>`

0 = The Import from iCloud menu item on the bottom toolbar folder menu is available and the Export to iCloud menu item on each file's menu is available.

1 = The Import from iCloud and the Export to iCloud menu options are disabled.

Feature Switches

`<key>disableEmail</key>`

`<integer>0</integer>`

0 = Emailing documents as file attachments is permitted.

1 = These actions are disabled.

`<key>disableMyFiles</key>`

`<integer>0</integer>`

0 = Writing data to the My Private Files folder is permitted.

1 = This action is disabled.

`<key>hideMyFiles</key>`

`<integer>0</integer>`

0 = Show the My Private Files location.

1 = Hide the My Private Files location.

This setting is only available in the Enterprise Files app.

`<key>enableFBiCloud</key>`

`<integer>1</integer>`

0 = Hide the FileBrowser iCloud location.

1 = Show the FileBrowser iCloud location.

`<key>disableShareWithApps</key>`

`<integer>0</integer>`

0 = Show the Share With Apps location.

1 = Hide the Share With Apps location.

`<key>disableNetDocPicker</key>`

`<integer>0</integer>`

0 = Allow the iOS document picker to open network locations.

1 = Prevent the iOS document picker from opening network locations.

(Version 8.9 of FileBrowser Professional/FileBrowser for Education onwards, version 1.1 of Enterprise Files onwards.)

`<key>disableNetDocDirect</key>`

`<integer>0</integer>`

0 = Allow the iOS document picker to access SMB storage directly rather than via the main app running in the background.

1 = Prevent the iOS document picker from using SMB direct.

(Version 20.12 of FileBrowser Professional/FileBrowser for Education onwards, version 6.1 of Enterprise Files onwards.)

`<key>disableNetDocSync</key>`

`<integer>0</integer>`

0 = Allow the iOS document picker to access sync storage.

1 = Prevent the iOS document picker from accessing sync storage.

(Version 23.8 of FileBrowser Professional/FileBrowser for Education onwards, version 7.3 of Enterprise Files onwards.)

`<key>disableSharePasteboard</key>`

`<integer>0</integer>`

0 = Allow Copy option to be shown on iOS Share menu.

1 = Prevent Copy option.

(Version 20.14 of FileBrowser Professional/FileBrowser for Education onwards [removed Oct'22], version 6.2 of Enterprise Files onwards.)

`<key>disableShareAirDrop</key>`

`<integer>0</integer>`

0 = Allow AirDrop option to be shown on iOS Share menu.

1 = Prevent AirDrop option.

(Version 6.15 of Enterprise Files onwards.)

`<key>disableShareFilesApp</key>`

`<integer>0</integer>`

0 = Allow Save to Files option to be shown on iOS Share menu.

1 = Prevent Save to Files option.

(Version 6.15 of Enterprise Files onwards.)

`<key>disableShareMessage</key>`

`<integer>0</integer>`

0 = Allow Messaging options to be shown on iOS Share menu.

1 = Prevent Messaging options.

(Version 6.15 of Enterprise Files onwards.)

`<key>disableCopyClipboard</key>`

`<integer>0</integer>`

0 = Allow Save to Files option to be shown on iOS Share menu.

1 = Prevent Save to Files option.

Note: Disabling both the Print Viewer and the Annotation option are also necessary to prevent users from copying document text to the clipboard. (Version 6.15 of Enterprise Files onwards.)

`<key>disablePasteClipboard</key>`

`<integer>0</integer>`

0 = Allow Paste iOS Clipboard to file in the current folder option.

1 = Prevent Paste iOS Clipboard option.

(Version 6.15 of Enterprise Files onwards.)

`<key>disablePrintView</key>`

`<integer>0</integer>`

0 = Allow Print View option on file menus.

1 = Prevent Print View option.

(Version 6.15 of Enterprise Files onwards.)

`<key>disableCreateZip</key>`

`<integer>0</integer>`

0 = Allow zip of a folder or zip of a selection of files.

1 = Prevent zip file creation.

(Version 20.14 of FileBrowser Professional/FileBrowser for Education onwards, version 6.2 of Enterprise Files onwards.)

`<key>disableCreateOffice</key>`

`<integer>0</integer>`

0 = Allow Create Microsoft Office file options on the Create a Document menu.

1 = Prevent Microsoft Office file creation.

(Version 20.38 of FileBrowser Professional/FileBrowser for Education onwards, Version 6.2 of Enterprise Files onwards.)

`<key>disableiOSMarkup</key>`

`<integer>0</integer>`

0 = Use integrated iOS PDF and image file markup tools.

1 = Use legacy FileBrowser PDF and image file markup tools.

(Version 20.34 of FileBrowser Professional/FileBrowser for Education onwards, version 6.12 of Enterprise Files onwards.)

`<key>hideTabs</key>`

`<integer>0</integer>`

0 = Show tabbed browsing interface.

1 = Prevent tabs, presenting a single view.

(Version 20.0 of FileBrowser Professional/FileBrowser for Education onwards,
version 6.0 of Enterprise Files onwards.)

<key>tabNameFromFolder</key>

<integer>0</integer>

0 = Tab names show the location/machine name.

1 = Tab names show the current folder.

(Version 20.0 of FileBrowser Professional/FileBrowser for Education onwards,
version 6.0 of Enterprise Files onwards.)

<key>disableOpenIn</key>

<integer>0</integer>

0 = Sending a document to another app via 'Open In' is permitted.

1 = This action is disabled.

<key>disablePhotoCapture</key>

<integer>0</integer>

0 = Photos may be captured within the app and written to folders.

1 = This action is disabled.

<key>disableAudioRecorder</key>

<integer>0</integer>

0 = The Record Audio feature may be used to create audio files in folders.

1 = This feature is disabled.

(Version 8.9 of FileBrowser Professional/FileBrowser for Education onwards,
version 1.1 of Enterprise Files onwards.)

<key>disableWebDAVServer</key>

<integer>0</integer>

0 = Users can enable a local WebDAV and web server to share local folders.

1 = This feature is disabled.

(Version 8.0 of FileBrowser Professional/FileBrowser for Education onwards,
version 1.0 of Enterprise Files onwards.)

<key>disablePhotoLibrary</key>

<integer>0</integer>

0 = Access to the iOS Photo Library folders is permitted.

1 = This action is disabled.

<key>disableShare</key>

<integer>0</integer>

0 = The Share menu option is permitted. This switch also controls the Export to
iCloud menu option (Version 5.5 onwards).

1 = This action is disabled.

<key>disableiTunesSync</key>

<integer>0</integer>

0 = Access to the On My iPad folder is permitted.

1 = This action is disabled.

<key>disableFileTransfer</key>

<integer>0</integer>

0 = Allow copy/move/rename/delete/download/create folder.

1 = File copy/move/rename/delete/download/create folder are disallowed.

(Version 5.3 of FileBrowser Professional onwards/All versions of FileBrowser for Education)

<key>disableURLDownload</key>

<integer>0</integer>

0 = Users can download web content using the folder menu option 'Download from URL'.

1 = The 'Download from URL' feature is disabled.

(Version 8.2 of FileBrowser Professional/FileBrowser for Education onwards)

<key>disableCreateWebclip</key>

<integer>0</integer>

0 = Users can create iOS home screen shortcuts to link to files or folders.

1 = The feature is disabled.

(Version 8.9 of FileBrowser Professional/FileBrowser for Education onwards, version 1.1 of Enterprise Files onwards.)

<key>bookmarksToApps</key>

<integer>0</integer>

0 = Links to other apps are blocked.

1 = Users can jump to other apps, including Safari, by tapping links in documents, using QR codes or typing a link into the bookmarks box.

(Version 9.3 of FileBrowser Professional/FileBrowser for Education onwards, version 1.5 of Enterprise Files onwards.)

<key>canEditRemoteFiles</key>

<integer>1</integer>

0 = The text editing option is disabled in the text file viewer.

1 = Tapping the menu button in the text file viewer and selecting 'Edit this File' allows the contents of the file to be changed.

(Version 12.5 of FileBrowser Professional/FileBrowser for Education onwards, version 3.1 of Enterprise Files onwards.)

<key>disableStartupPassword</key>

<integer>0</integer>

0 = Users may set their own startup password on the Config tab.
1 = The startup password feature is disabled.
(Version 8.2 of FileBrowser Professional/FileBrowser for Education onwards)

<key>enforceStartupPassword</key>

<integer>0</integer>

0 = Users may choose to set a startup password, provided that 'disableStartupPassword' is not set to 1.
1 = The startup password feature is mandatory. Users will be required to set a startup password when the app is next launched. The password criteria can be set using the following settings. When set to 1, this setting overrides the 'disableStartupPassword' setting.
(Version 1.5 of Enterprise Files onwards)

<key>minStartupPasswordLength</key>

<integer>0</integer>

0 = The startup password can be of any length.
1-25 = Specifies the minimum overall length of the startup password.
(Version 1.5 of Enterprise Files onwards)

<key>minStartupPasswordCapitals</key>

<integer>0</integer>

0 = Capital letters are not required in the startup password.
1-25 = Specifies the minimum number of capital letters that must be present in the startup password.
(Version 1.5 of Enterprise Files onwards)

<key>minStartupPasswordDigits</key>

<integer>0</integer>

0 = Numeric digits are not required in the startup password.
1-25 = Specifies the minimum number of numeric digits that must be present in the startup password.
(Version 1.5 of Enterprise Files onwards)

<key>minStartupPasswordPunctuationChars</key>

<integer>0</integer>

0 = Punctuation characters are not required in the startup password.
1-25 = Specifies the minimum number of punctuation characters that must be present in the startup password.
(Version 1.5 of Enterprise Files onwards)

<key>disableWebDAVServer</key>

<integer>0</integer>

0 = Users can start the local WebDAV server to share locations in FileBrowser.

1 = The local WebDAV server feature is disabled.
(Version 8.2 of FileBrowser Professional, version 1.1 of Enterprise Files onwards)

<key>WebDAVServerUsername</key>

<string>0</string>

ef = Set the user name for the WebDAV server (password must be set in app).

<key>WebDAVServerPortnumber</key>

<integer>20005</integer>

20005 = The local port number used by the WebDAV server.

<key>WebDAVUnshareMyFiles</key>

<integer>0</integer>

0 = The local WebDAV server exposes My Private Files.

1 = The local WebDAV server will hide My Private Files.

(Version 11.0 of FileBrowser Professional, version 2.5 of Enterprise Files onwards)

<key>WebDAVUnshareiTunesSync</key>

<integer>0</integer>

0 = The local WebDAV server exposes iTunesSync.

1 = The local WebDAV server will hide iTunesSync.

(Version 11.0 of FileBrowser Professional, version 2.5 of Enterprise Files onwards)

<key>WebDAVUnshareShareWithApps</key>

<integer>0</integer>

0 = The local WebDAV server exposes Share With Apps.

1 = The local WebDAV server will hide Share With Apps.

(Version 11.0 of FileBrowser Professional, version 2.5 of Enterprise Files onwards)

<key>WebDAVUnsharePhotoLibrary</key>

<integer>0</integer>

0 = The local WebDAV server exposes Photo Library.

1 = The local WebDAV server will hide Photo Library.

(Version 11.0 of FileBrowser Professional, version 2.5 of Enterprise Files onwards)

<key>WebDAVMachineUnsharedList</key>

<string></string>

A list of remote location names that are disabled and hidden from remote access using the local WebDAV server. Each location is identified by its display name and multiple names are separated by a forward slash character.

(Version 8.3 of FileBrowser Professional, version 1.1 of Enterprise Files onwards)

<key>disableHandoff</key>

<integer>0</integer>

0 = iOS Handoff feature is allowed.

1 = iOS Handoff feature is disabled.

(Version 14.3 of FileBrowser/FileBrowser Professional/FileBrowser for Education onwards, version 4.2 of Enterprise Files onwards.)

<key>disableRunShortcuts</key>

<integer>0</integer>

0 = User is permitted to use X-Callback url launches with actions, commonly used with the iOS Shortcuts app.

1 = User is not permitted to start X-Callback url launches with actions.

(Version 15.1 of FileBrowser, FileBrowser Professional and FileBrowser for Education, Version 5.1 of Enterprise Files onwards.)

<key>disableSetQuickCapture</key>

<integer>0</integer>

0 = User is permitted to set the Quick Capture folder for docs/images/videos.

1 = User is not permitted to set the Quick Capture folder themselves. The feature will still be available if [quickCaptureBookmarkPath](#) is set via MDM.

(Version 14.8 of FileBrowser Professional onwards, version 4.8 of Enterprise Files onwards.)

<key>quickCaptureBookmarkPath</key>

<string>On My iPhone/photo-folder</string>

The local path to a folder where documents, images and videos will be captured when using the camera icon at the top of the locations list to capture images.

(Version 14.8 of FileBrowser Professional onwards, version 4.8 of Enterprise Files onwards.)

<key>disableSlideshows</key>

<integer>0</integer>

0 = User is permitted to create slideshows and see the slideshows location entry.

1 = User is not permitted to create slideshows and see the slideshows location entry.

(Version 15.7 of FileBrowser Professional onwards.)

<key>enableUSB</key>

<integer>0</integer>

0 = User is not permitted to see the USB location entry or link to USB storage.

1 = User is permitted to see the USB location entry and link to USB storage.

(Version 16.0 of FileBrowser Professional onwards.)

<key>disableHomeScreenImage</key>

<integer>0</integer>

0 = User is permitted to set an image as their app home screen background.

1 = User is not permitted to set an image as their app home screen background.

(Version 20.24 of FileBrowser Professional onwards. Version 20.24 of FileBrowser for Education onwards.)

Connection Feature Switches

(Version 5.3 of FileBrowser Professional onwards/All versions of FileBrowser for Education)

<key>disableAddBox</key>

<integer>0</integer>

0 = Users may add a new connection to the Box service.

1 = This action is disabled.

<key>disableAddDropbox</key>

<integer>0</integer>

0 = Users may add a new connection to the Dropbox service.

1 = This action is disabled.

<key>disableAddSMB</key>

<integer>0</integer>

0 = Users may add a new connection to a SMB/CIFS server.

1 = This action is disabled.

<key>disableAddGDrive</key>

<integer>0</integer>

0 = Users may add a new connection to the GDrive service.

1 = This action is disabled.

<key>disableAddWebDAV</key>

<integer>0</integer>

0 = Users may add a new connection to a WebDAV server.

1 = This action is disabled.

<key>disableAddFTP</key>

<integer>0</integer>

0 = Users may add a new connection to a FTP server.

1 = This action is disabled.

<key>disableAddSkyDrive</key>

<integer>0</integer>

0 = Users may add a new connection to the OneDrive service.

1 = This action is disabled.

<key>disableAddOnePro</key>

<integer>0</integer>

0 = Users may add a new connection to the OneDrive for Business service.

1 = This action is disabled.

<key>disableAddSharePoint</key>

<integer>0</integer>

0 = Users may add a new connection to the SharePoint service.

1 = This action is disabled.

<key>disableAddS3</key>

<integer>0</integer>

0 = Users may add a new connection to the Amazon S3 service.

1 = This action is disabled.

<key>disableAddB2</key>

<integer>0</integer>

0 = Users may add a new connection to the Backblaze B2 service.

1 = This action is disabled.

<key>disableAddpCloud</key>

<integer>0</integer>

0 = Users may add a new connection to the pCloud service.

1 = This action is disabled.

<key>disableAddOpenText</key>

<integer>0</integer>

0 = Users may add a new connection to the OpenText service.

1 = This action is disabled.

(Version 6.12 of Enterprise Files onwards.)

SMB Preferences

<key>smbKeepAliveSeconds</key>

<integer>30</integer>

30 = Number of seconds between sending SMB keepalive packets to keep server connections open while the app is active. Default is 30, minimum value is 5 seconds.

(Version 7.4 of Enterprise Files onwards.)

OneDrive Preferences

<key>disableSkyDriveDownsize</key>

<integer>0</integer>

0 = Photos uploaded to OneDrive (previously SkyDrive) are automatically reduced in size on upload.

1 = No downscaling is performed.

(Setting removed in FileBrowser 13.0, FileBrowser Professional 13.0, Enterprise Files 4.0.)

<key>enableOneDriveAuthViaSafari</key>

<integer>0</integer>

0 = Authentication to the OneDrive cloud sharing service is carried out within the FileBrowser app.

1 = iOS Safari is used to perform the authentication.

(Setting added in FileBrowser 13.0, FileBrowser Professional 13.0, Enterprise Files 4.0.)

<key>onedriveAccountLockdown</key>

<string>user@acme.com,@anyco.com</string>

OneDrive and OneDrive for Business connections are only usable with accounts matching ones in this list. The list may contain multiple account email addresses separated by commas. Multiple addresses may be matched by using an address starting with '@' and followed by the domain. More than one email domain can be added this way.

(Setting added in Enterprise Files 6.17.)

Box Preferences

<key>boxAccountLockdown</key>

<string>user@acme.com,@anyco.com</string>

Box connections are only usable with accounts matching ones in this list. The list may contain multiple account email addresses separated by commas. Multiple addresses may be matched by using an address starting with '@' and followed by the domain. More than one email domain can be added this way.

(Setting added in Enterprise Files 6.17.)

<key>enableBoxAuthViaSafari</key>

<integer>0</integer>

0 = Authentication to the Box cloud sharing service is carried out within the FileBrowser app.

1 = iOS Safari is used to perform the authentication.

S3 Preferences

<key>s3PathStyleRequests</key>

<integer>0</integer>

0 = Send virtual hosted style requests to all configured S3 servers.

1 = Send path style requests to all configured S3 servers.

(Setting added in FileBrowser Professional 20.36, Enterprise Files 6.12.)

Google Drive Preferences

<key>exportGDriveAsPDF</key>

<integer>0</integer>

0 = When a native Google Drive document is copied to other storage or emailed as an attachment or sent to another app, it is converted to the appropriate Microsoft Office format before export.

1 = Export of documents is to PDF format.

<key>viewGDriveAsNative</key>

<integer>0</integer>

0 = When viewing a native Google Drive document, the file is downloaded from Google Drive as a PDF and shown in an iOS viewing component.

1 = Native Google Drive documents are shown using a web browser component.

<key>openGDriveInSafari</key>

<integer>0</integer>

0 = When tapping a native Google Drive document, the file is shown in an iOS viewing component.

1 = When tapping a native Google Drive document, the file is shown in Safari so that it can be edited.

Network Scanning

<key>enableBonjour</key>

<integer>1</integer>

0 = Network scans do not use the Apple Bonjour discovery system.

1 = Network scans will use the Apple Bonjour discovery system.

<key>enableDiscoveryOnStartup</key>

<integer>0</integer>

0 = The user must switch to the network scan tab to start scanning.

1 = Network scanning will start when the app is started.

<key>enablePortScan</key>

<integer>1</integer>

0 = Network scans do not use the Apple Bonjour discovery system.

1 = Network scans will use the Apple Bonjour discovery system.

DLP Settings

(Enterprise Files app from version 1.0.)

`<key>AUPmode</key>`

`<integer>0</integer>`

0 = Do not show the Acceptable Use Policy screen.

1 = Show the AUP screen once only.

2 = Show the AUP screen at every app startup.

3 = Show the AUP screen once per day at app startup.

`<key>AUPtitle</key>`

`<string>Title text.</string>`

Title text for AUP screen.

`<key>AUPmessage</key>`

`<string>Message text.</string>`

Message body text for AUP screen. Note that Markdown formatting is permitted when composing this text.

`<key>maxFileOpSizeMB</key>`

`<integer>0</integer>`

0 = Unlimited maximum size.

1-1000 = Limit copy/move/delete operations so that a single operation will affect files whose size adds up to less than the prescribed amount in megabytes.

`<key>dlpProhibitedExtensions</key>`

`<string>docx,xlsx,pdf</string>`

Files with the listed file extensions (separated by commas) are prohibited from copy, move, delete and rename operations.

`<key>dlpPermittedDomains</key>`

`<string>domain1.com, domain2.com</string>`

If a user is permitted to create their own server connections, the domain will be restricted to one from this list. Enter a comma separated list, e.g.

admin.company.com,sales.company.com. (Enterprise Files app from version 4.0.)

Settings Added/Updated* Since Previous Document Versions

15th November 2016

- adminPassEndsViewer
- extractVideoThumbnailsSMB
- 1offlineRemoteIsReadOnly
- 1offlineSyncFileExtensions

10th January 2017

- 1offlineRemoteIsReadOnly
- 1offlineSyncFileExtensions

9th February 2017

- bookmarksToApps
- disableCasting*
- saveSelection

22nd February 2017

- enforceStartupPassword
- minStartupPasswordLength
- minStartupPasswordCapitals
- minStartupPasswordDigits
- minStartupPasswordPunctuationChars

26th April 2017

- disableStartupPopup
- hideBookmarkHistory
- uiThemeCode
- photoLibraryRaw

21st August 2017

- neverDisableAutoLock
- writeXMPFiles
- capHiResAudio
- capHiResVideo
- capHiResPhoto
- disableOfflineContent
- WebDAVUnshareMyFiles
- WebDAVUnshareiTunesSync
- WebDAVUnshareShareWithApps
- WebDAVUnsharePhotoLibrary
- squareThumbnails
- hideQuickAccessBar

16th August 2018

- canEditRemoteFiles
- offlineSyncSourcePath
- offlineDisplayName
- disableAddS3
- disableAddB2
- disableAddpCloud
- disableSkyDriveDownsize*

enableOneDriveAuthViaSafari
autoMyFilesLogin
deleteUnmanagedMachines
disableSyncToRemote
dlpPermittedDomains

19th October 2018
disableHandoff

3rd January 2019
disableSetQuickCapture
quickCaptureBookmarkPath

29th April 2019
disableRunShortcuts
openInFileTypes
listModeOpenInButtons

12 Aug 2019
disableSlideshows

27 September 2019
enableUSB

17 September 2020
disableNetDocDirect
disableSyncToLocal
hideTabs
tabNameFromFolder

3 November 2020
1offlineRemoteSyncFrequencyMins
disableSharePasteboard
disableCreateZip

11 March 2021
None (FileBrowser for Business is now FileBrowser Professional.)

6 July 2021
1offlineSyncFileExclusions

3rd August 2021
Fix typo in disableSlideshows

6 Jan 2022
Removing machines/bookmarks/sync tasks using MDM settings
Added disableHomeScreenImage setting.

19 Apr 2022
Added disableiOSMarkup setting.

27 May 2022
Added disableCreateOffice setting.

27 Sep 2022
Added s3PathStyleRequests setting.
Added disableCustomTasks setting.

18 Oct 2022
Added disableShareAirDrop setting.
Added disableShareFilesApp setting.

Added disableShareMessage setting.
Added disableCopyClipboard setting.
Added disablePasteClipboard setting.
Added disablePrintView setting.

2 Jan 2023

Added onedriveAccountLockdown setting.
Added boxAccountLockdown setting.

1 April 2023

Added hideBookmarkLinkEntry setting.
Added lofflineRemoteBackupMode setting.

1 July 2023

Added disableNetDocSync setting.

1 Aug 2023

Added WebDAV server settings, WebDAVServerUsername, WebDAVServerPortnumber.

1 Dec 2023

Added smbKeepAliveSeconds setting.
Added openDocumentsMaximised setting.

3 Jan 2024

Added openGDriveInSafari setting.
Added favourite location settings.